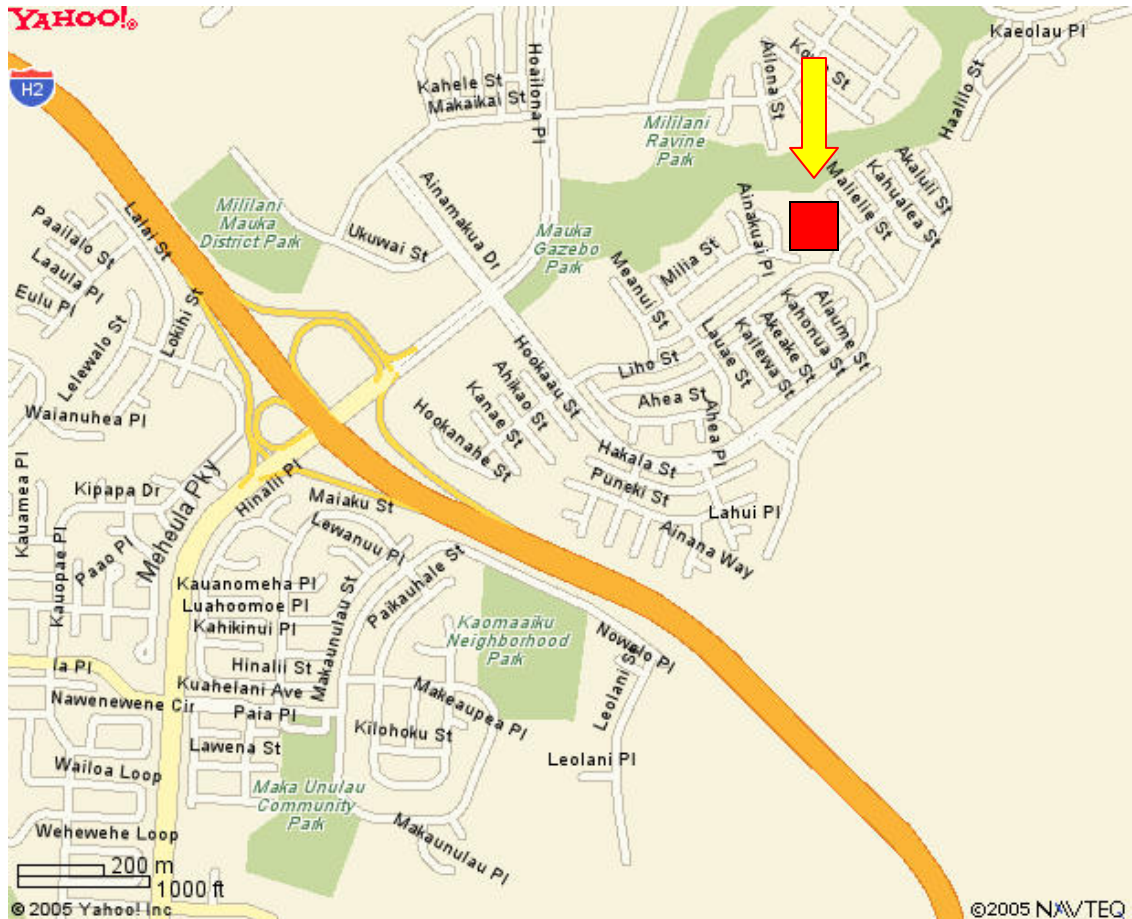


Mililani Chess Club

Thursdays 6:00pm to 9:00pm

Rec. Center 6
95-1010 Konaku St
Mililani, HI 96789

Contact Club President: Guy P. Ontai
(808) 625-2769 or gpontai@hawaii.rr.com



Directions From Town:

Take H-1 to H-2 Freeway

Take H-2 and exit at Mililani Mauka exit (2nd exit)

Turn right at 1st stop light (Ainamakua Dr.)

Take next left (Ainamakua Dr.)

Rec. Center 6 is on the left about 6 blocks back where road jogs